

Actility Enterprise Channels Webinar

December 2021



Actility
Connecting with intelligence

Agenda

Shmuel Solomon



Webinar Meeting Agenda

- Webinar Introduction – **Shmuel Solomon**
- What's new on ThingPark Enterprise v7.1 – Live demonstration **Ramez Soss**
- The Abeeway Mobile Application - **Rohit Gupta**
- ThingPark Central service presentation - **Sitha Oum**
- Actility MarketPlace solution overview and partners benefit – **Marwan Madwara**
- Partner Use Case – Road Surface Temperature Monitoring by Uniotec CEO – **Michael Price**
- Summary and Q&A

Introduction

Shmuel Solomon



Webinar Introduction

- Welcome to our fourth Enterprise Channels Webinar.
- This webinar provides a view on:
 - ThingPark Enterprise business enablers - TPE release 7.1 with a UI/UX demo from our Community Platform.
 - Introduction to the Abeeway mobile application, a white label solution.
 - ThingPark Enterprise Professional Services – Introduction to the Channel Central application.
 - ThingPark Market solution, the leading LPWA marketplace with widest selection of high quality IoT products provided by worldwide qualified vendors.
 - Guest speaker - Michael Price, CEO of Uniotec UK, walks us through his Road Surface Temperature Monitoring solution.

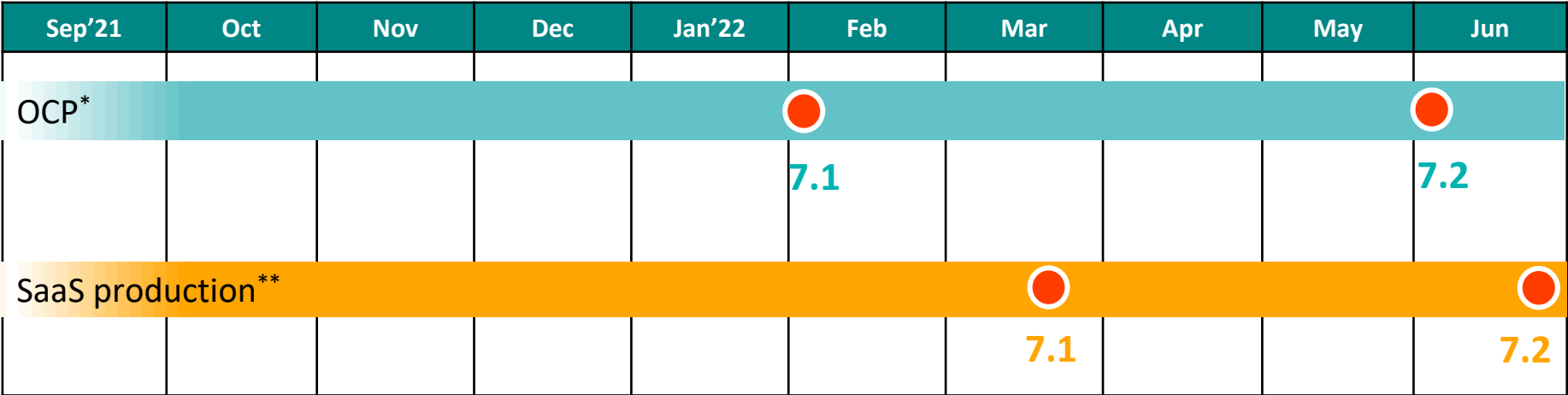
What's new on ThingPark Enterprise v7.1

Ramez Soss



* Based on Gate-3 dates
** Based on Gate-5 dates + 1 week
*** Available in TPE-OCP 7.1.1

ThingPark Enterprise Release Plan



TPE 7.0 - see [release notes](#)

- Device & Base Station tagging
- Downlink multicast
- UI/UX enhancements (search & cartography)
- Passive Roaming (via TEX)
- Integration with ThingPark Activation services (TPA)
- Integration with TP Marketplace
- Device provisioning by QR code
- License management enhancements
- New generic device profiles supporting LoRaWAN 1.0.4
- Support AS923-2, AS923-3 and AS923-4 regional profiles
- [OCP] Built-in NTP service
- [OCP] Secure GW-NS connection through TLS

TPE 7.1

- Enriched Base Station UI/UX
- ADR enhancements
- Support Semtech's Basics™ Station packet forwarder
- Support custom headers on "Basic HTTP" connections
- Walk-by/drive-by use-cases via mobile gateways providing temporary RF coverage
- [SaaS] 2-factor authentication
- [OCP]*** Delegation of end-user authentication to 3rd part Identity Providers

TPE 7.2

- Enhanced role management: multi-tenancy within the same TPE subscription
- Automated renewal of BS security certificates

The Abeeway Mobile Application

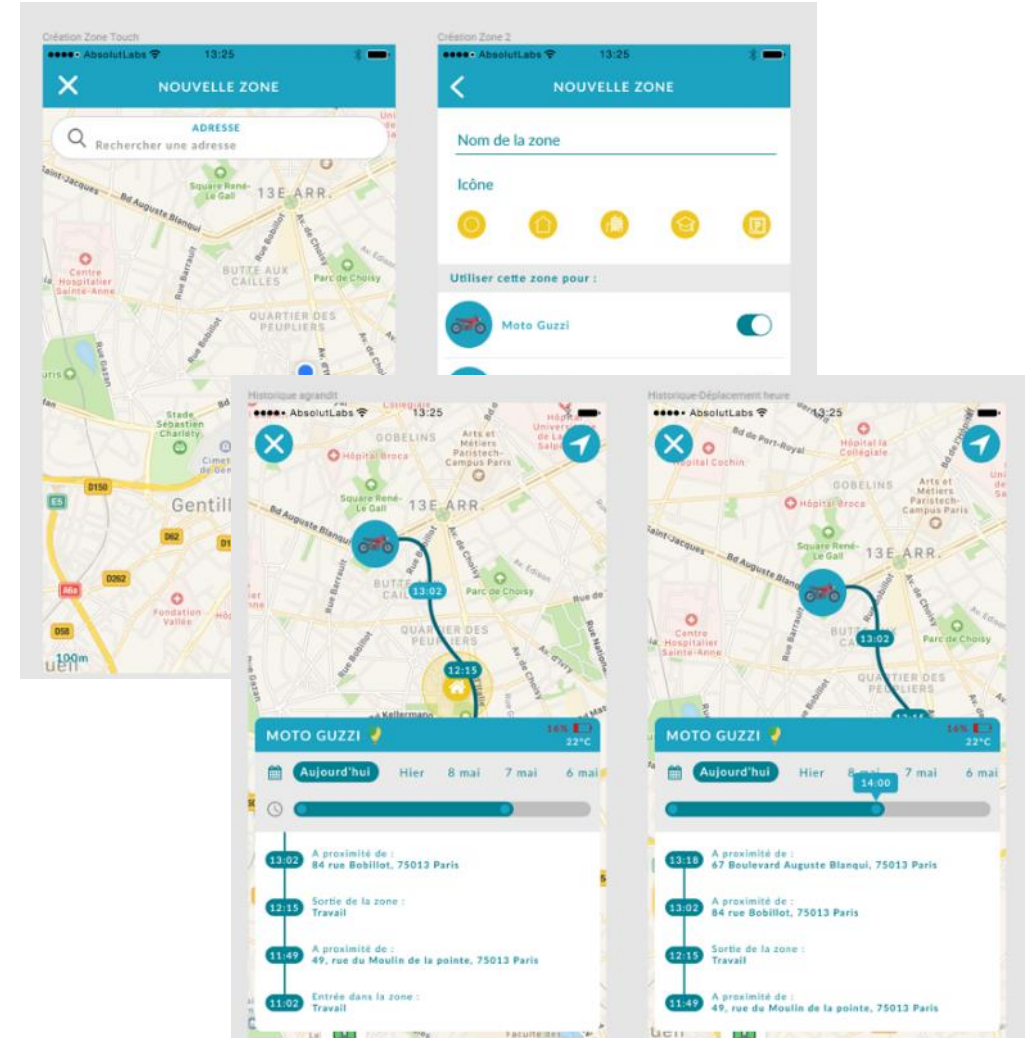
Rohit Gupta



Helping our customers to address the consumer market with the **Abeeway Mobile Application**

User-friendly mobile app enabling multi-purpose consumer tracking

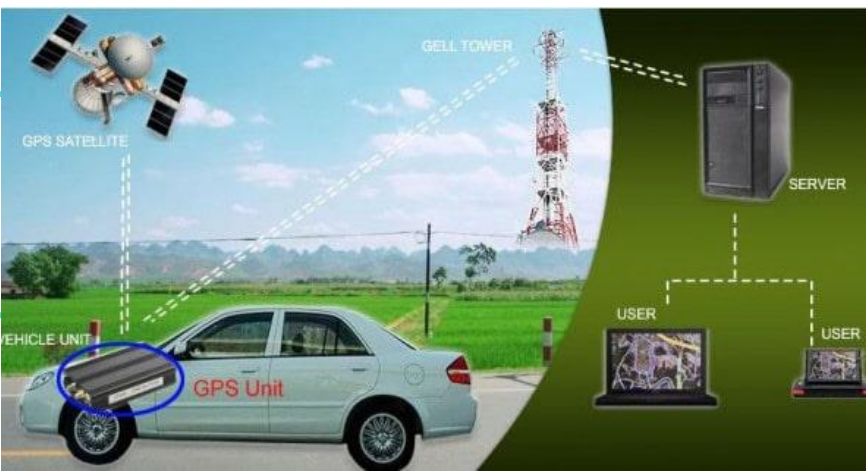
- Feature set : manage and customize your tracker, locate it on demand anywhere anytime, view its detailed motion history, set up alerts, change modes, share it with our users, update your tracker's firmware....
- Native apps on iOS and Android
- Typical Use case: Find lost objects or track pets, loved ones.



Designed to be easily customizable to fit any brand identity and particular needs under white label

Abeeway Mobile APP (Demonstration)





Car tracking with Insurance companies

- Find lost cars and reduce the insurance costs with long autonomy and reliability, unlike the regular cellular GPS-based devices
- To address consumer needs in France, Insurance company in France will launch a mass-market car tracking offer, with LoRaWAN connectivity based on public network, Abeeway Compact Tracker and Abeeway Mobile APP



Accident
Responsibility

Theft/
Vandalism



Breakdown

Remote
assistance



Benefit: safety and security for cars, technical assistance and theft

Insurance company
name - Confidential



What's new in ThingPark Location

Rohit Gupta



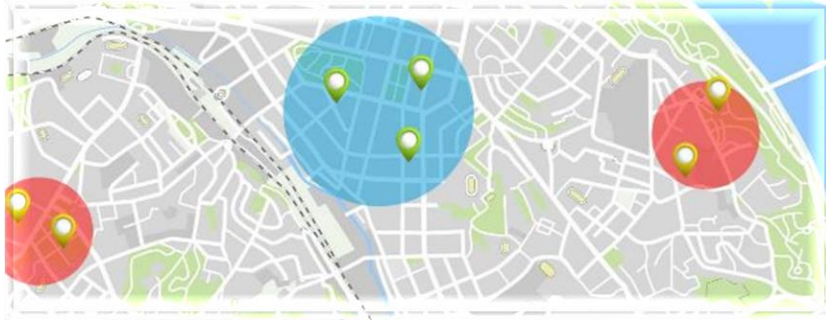
BLE Indoor Positioning with ThingPark X Location Engine

How does it work?

1. A BLE Beacon Map is created in GeoJSON format and uploaded to ThingPark X Location Engine
2. Abeeway device 'Sniffs' Nearby BLE Beacons and sends the list of detected Beacon IDs with their signal Strengths (RSSI) to ThingPark X Location Engine
3. ThingPark X Location Engine resolves the tracker's location by comparing the reported Beacon Data with the Beacon Map.
4. The Resolved Location can be visualized by Abeeway Device Manager
5. The Resolved Locations can be forwarded to an external Application Server through the Location APIs.

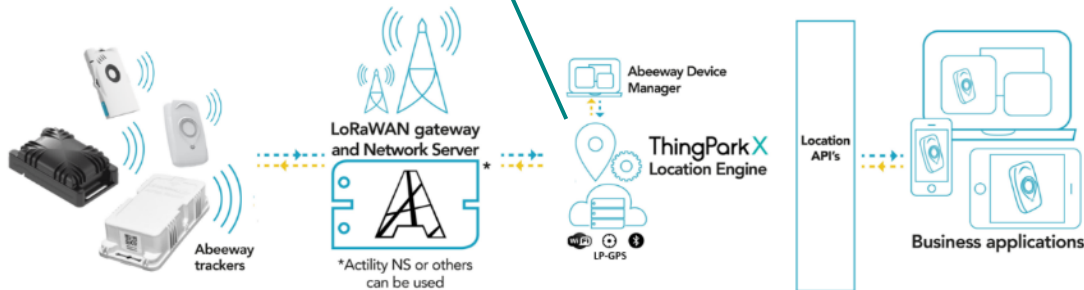


Geofencing with ThingPark X Location Engine for Indoor/Outdoor use cases



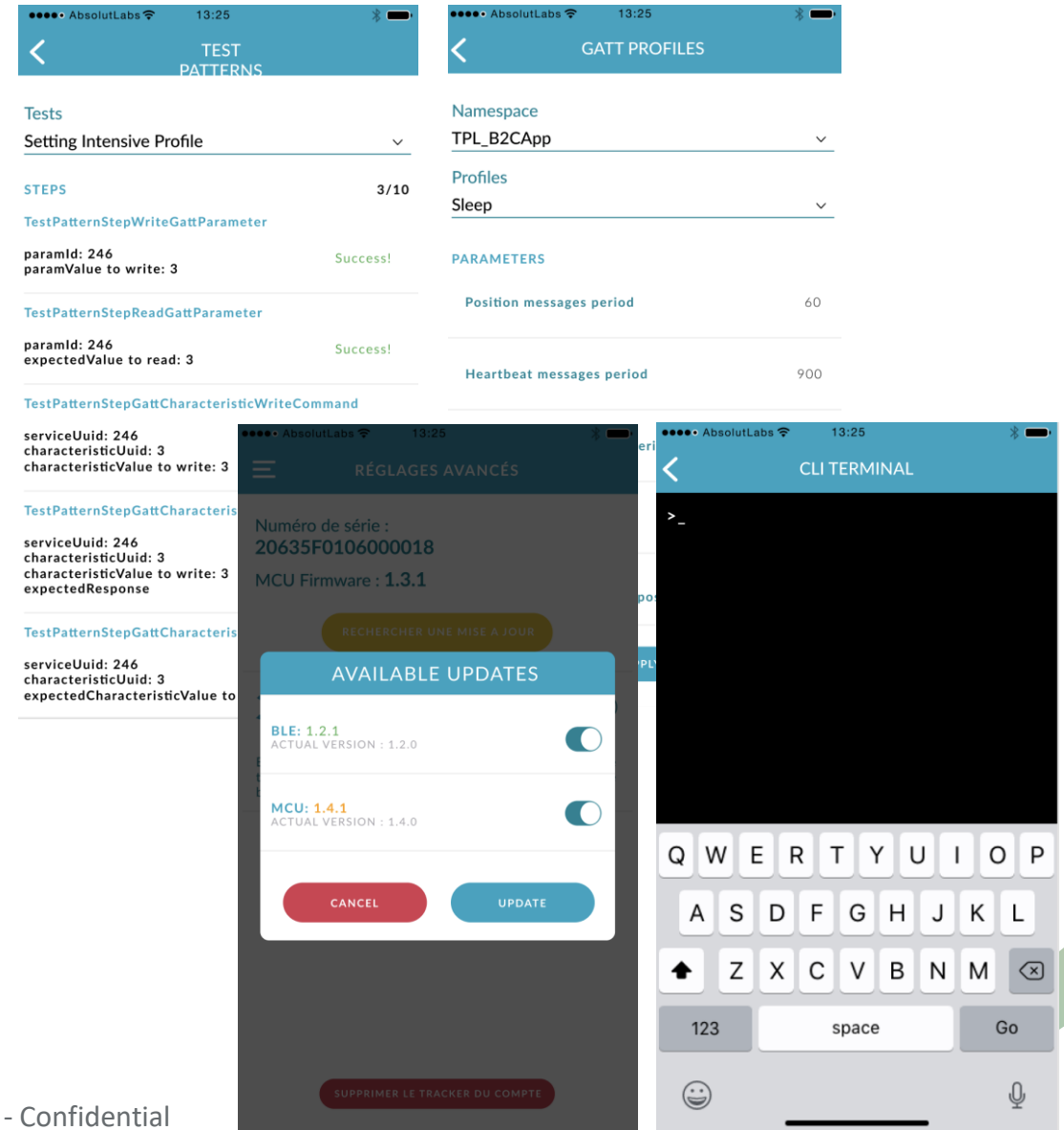
ThingPark X Location Engine allows the **creation of geofences** and send notifications to the business application when the tracker is inside or outside the geofence

The positions of the tracker can be based on **WiFi, GPS or BLE**



Debugging the trackers with Mobile App

- Abeeway tracking app will allow debugging of the trackers over BLE (without opening the casing for Compact/Industrial Tracker)
- The following use cases will be supported:
 - CLI Emulation over BLE*
 - Change the configuration profile of the trackers
 - Run test patterns
 - Firmware update



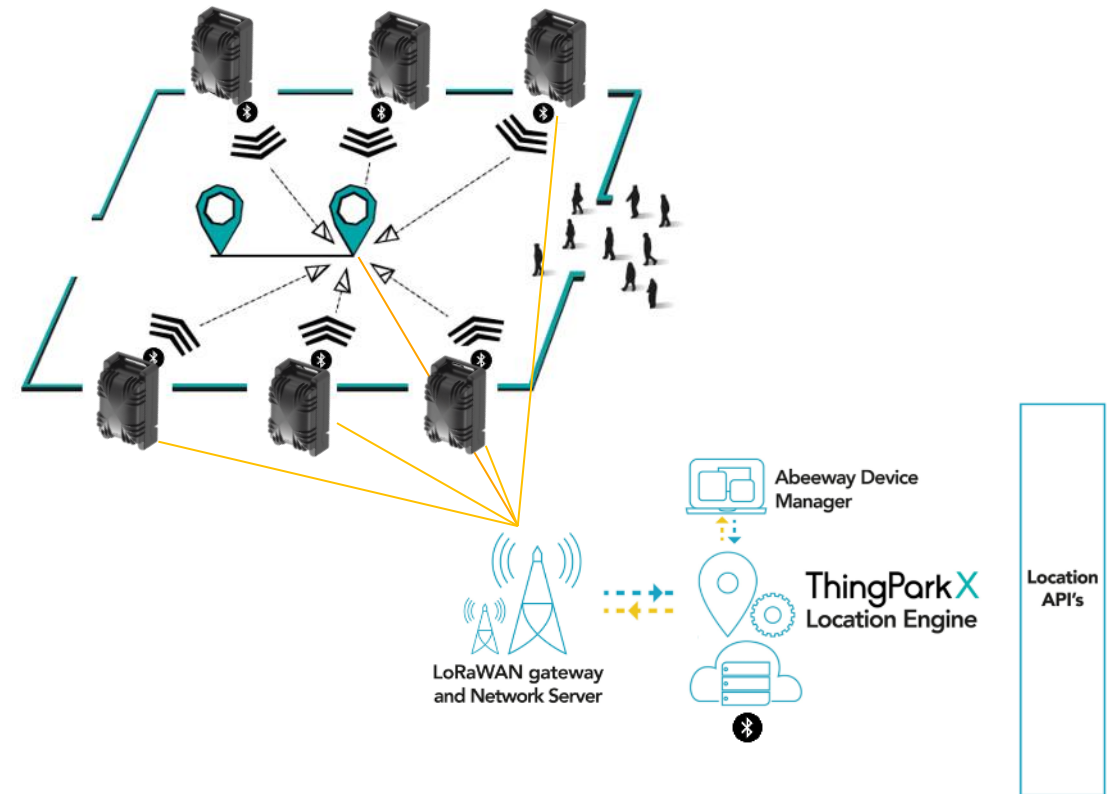
Abeeway Trackers as managed BLE beacons

Key features

- Beacons can be configured and monitored over LoRaWAN
- Supported BLE beacon formats: iBeacon, Eddystone, Altbeacon
- This feature is available on all the trackers
- **New Product: ATEX II BLE Beacon based on Compact tracker (Available Q1'2022)***

How does it work?

- Abeeway device 'Sniffs' Nearby BLE Beacons.
- The Beacon ID's (iBeacon, Eddystone, Altbeacon) are sent over LoRaWAN to the Location Solver / Application Server.



Configurable button mapping to user action

- There is now configurable button mapping to user actions (Applicable to Smart Badge/Micro Tracker Only)*
- Example Use Case: In hospitals which require SoS to be triggered with single click instead of triple click.

Button mapping

Long press

Single click

Double click

Triple clicks or more

Long press duration in seconds

Reserved for future use.

Action

0: No action

1: Battery level

2: Start/Stop SOS

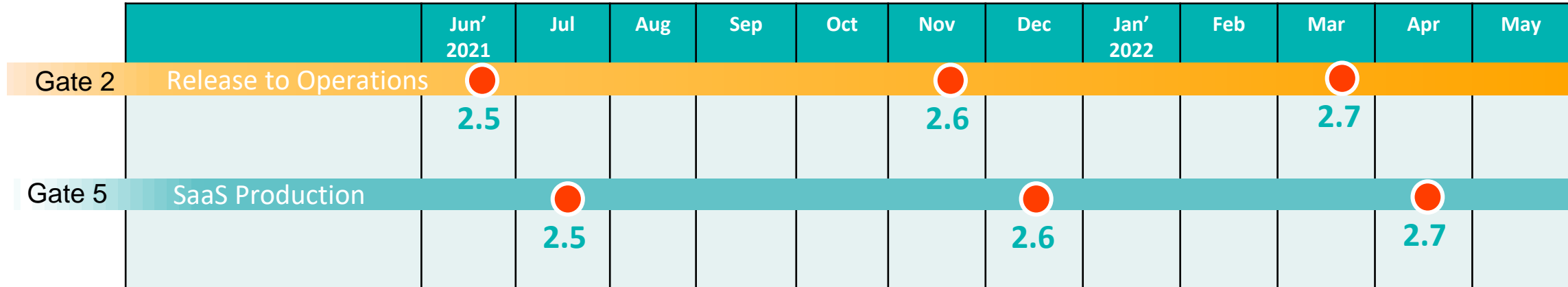
3: Start Alert

4: Proximity whitelist

5: Angle detection manual trigger

6-15: Reserved for future use.

ThingPark X Location Engine Product Roadmap 2021/2022



V 2.5

- MQTT Support in Operator interface
- Mobile APP features

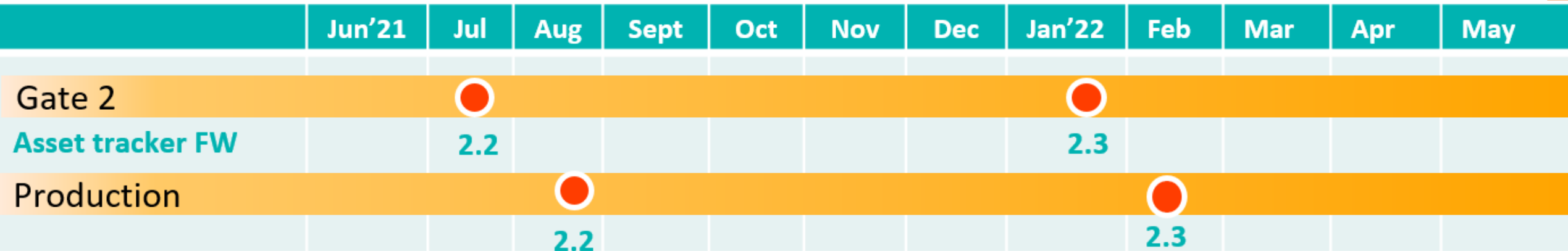
V 2.6

- BLE Indoor Positioning
- Support for multiple platforms/distributors within mobile App

V 2.7

- Forward error correction for GPS
- Selection of Google and HERE WiFi database
- Add customer's API Key of Google
- BLE solver enhancements

ThingPark Location Asset Tracker FW Roadmap 2021/2022



Asset Tracker V2.2

- JOIN procedure enhancements
- Improve GPS/LP-GPS algorithm
- Fast GPS cancel in case of no satellites to save power
- Quuppa beaconing support
- Mobile APP features
- BLE Geozoning (to detect safe, Hazard zones)
- Support for BLE-LPGPS mode

Asset Tracker V2.3

- BLE advertising in startup/join state
- Support for CLI over BLE Interface
- Accelerometer management enhancements
- BLE beacon transmission
- Configurable button mapping to action**


ThingPark Central

Sitha Oum



ThingPark Central

- A business software portal to empower Actility distributors to manage their customers and subscriptions
- Actility Central access: central.actility.com
- Centralized tool for autonomous managing of TPE licenses
- Create and manage your end customers
- Create and follow their subscriptions: OCP (license creation) and SaaS
- Upgrades
- Renewal
- Track all transactions



ThingPark Enterprise

Channel Portal - Activity Demo TPE Vendor


Activity Demo TPE Vendor
Logout

Dashboard
Add a new customer

Customers
Subscriptions
Transactions

Search

Name	Customer ID	Nb. subscriptions	Creation date	Actions
Activity Demo	Internal	3	2018-06-21 15:51	
Activity Testing	Activity	2	2018-08-22 15:31	



Activity Central

ThingPark Subscription Management Channel Portal

Sitha Oum
Activity Demo TPE CP
Logout

Dashboard
ACTIVITY
Add a new customer
Terms & Conditions

GENERAL

Edit Customer Profile

THINGPARK SUBSCRIPTIONS

Overview

Add new subscription

TRANSACTIONS

Overview

Offers
All

Expiration
No filter

Search
Export

Name	ID	Offer	Creation date	Expiration date
Test OCP	2	OCP Standard Per Gateway License	2021-06-21 15:28	2022-09-19 15:28
TPEOCP2	ocp	OCP Starter Pack	2021-09-06 15:47	2022-09-06 15:47
Activity Training	activity-training	OCP Internal use license	2021-07-28 01:40	2022-07-28 01:40
Test_Sitha_Device_based	Test_Sitha_Device_based	OCP Device Based license Test	2021-06-25 08:15	2022-06-25 08:15

Example of OCP license management

Subscription description

General

Subscription name

Activity Training

Subscription ID

activity-training

Installation ID

5eec21d62a7abdc5887e06c85322e4e0445d29b2ccb4aaff1747c408d705eda8

Update

Offer

Offer

OCP Internal use license



Upgrade

Creation date

2021-07-28 01:40

Activation date

2021-07-28

The activation date does not affect the effective license activation date (the license remains activated immediately).
The activation date only impacts the license expiry date which will correspond to the activation date + the engagement period ordered

Expiration date

2022-07-28 01:40

Administrative information

Expiration date

2022-07-28 01:40

This subscription will be automatically renewed at the end of the engagement period for **1 year**.

Cancel automatic renewal

Automatic renewal can be cancelled up to 5 days before the renewal date.

Options

Only upgrades are available, downgrade are only possible at contract renewal

Base stations

3

Options Upgrade

Devices

2000

Network based location – Optional

0

Standard connectors

3

☐ High Availability

Save

Close

Send license

Download license

Example of SaaS license management

Offer
SaaS Standard Per Gateway License ▼ Upgrade

Creation date
2021-05-06 17:08

Expiration date
2022-05-06 17:08

This subscription will be automatically renewed at the end of the engagement period for **1 year**.

[Cancel automatic renewal](#)

Automatic renewal can be cancelled up to 5 days before the renewal date.

Options
Only upgrades are available, downgrade are only possible at contract renewal

Base stations
21 Options Upgrade

Devices
50000

Network based location – Optional
0

SaaS

Platform account
Thingpark Enterprise EU

ISM bands
☐ AS 923MHz ISM Band
☐ Australia 915-928MHz ISM Band
☐ China 779-787MHz ISM Band
☐ CN 470-510MHz ISM Band
☐ EU 433MHz ISM Band
☐ EU 863-870MHz ISM Band
☒ India 865-867MHz ISM Band
☐ South Korea 920-923MHz ISM Band
☐ US 902-928MHz ISM Band

SMP subscriber ID

Default admin email
sitha.oum+tpe-saas-eu-test@actility.com Reset account

Subscription status
ok (2019-07-03 14:27)

Synchronization status
synchronized (2020-11-08 23:54) Check synchronization

ThingPark Marketplace

Marwan Madwara



To become a seller, please [click here](#)!

ThingParkMarket by Actility

Search within store items...





FR My Account My Cart

IoT Solutions Devices IoT Connectivity LoRaWAN Gateways Accessories Services Frequency Guide FAQ Blog

ThingPark Market offers you a wide selection of IoT Devices, starter kits and LoRaWAN Gateways to start your own project

Discover now

New Arrivals

Product Image	Product Name	Price	Original Price
	Minew - BeaconPlus E7-6003A	€42.00	(from €23.00)
	NKE Wattec Bob Assistant DE/NKE1000	€689.00	
	Actility - Food Safety & Cold Chain Management - Evaluation Kit	€800.00	
	Aberway Low-Power Asset Tracking Evaluation Kit - Private Network	€104.00	

Market.thingpark.com

Actility

Join Unlimited Possibilities

177

Active Sellers

938

Available Products

808

Devices

70

Gateways

33

Solution Kits

14

Services

14

Accessories

Benefits of being a seller



Get more
visibility



Secure
transactions



Sell in
24 hours



Qualified
traffic



Performance
based



Worldwide
sales

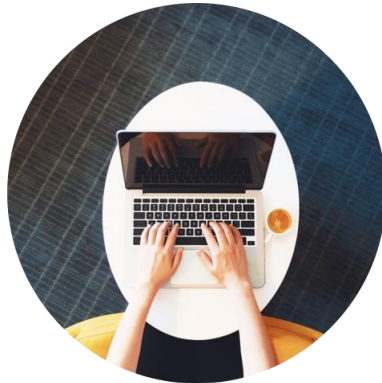
Become a seller in few steps...

It's simple: register your account, onboard your products, and get into business.



Complete your profile

Complete your business info and finalize your microsite



Add your products

Build your product listings, control stock and set prices



Fulfill orders

Manage orders and shipping methods, ship items directly to your customers and provide customer service



Get paid

No setup or monthly fees!
A 15% commission fee is automatically deducted from your delivered orders

Orders [Filter Orders](#)

Perform on all retrieved records * No action and change status * Automatic [Submit](#)

Items 1 to 10 of 21 total

Show 10 per page

You're currently reading page 1 [Page 2](#) [Page 3](#) [Next Page](#)

[Collapse all](#) / [Expand all](#)

#	PO ID	Order ID	Order Date	PO Date	Delivery Method	Status	Items	Download	Store
+	● 000006136-4	000006136	6/9/21, 3:42 PM	6/17/21, 10:53 AM	Tier Shipping Grid - Standard shipping (weight)	Delivered	1	PDF	ThingPark Marketplace
+	● 000005937-1	000005937	11/20/20, 11:27 AM	11/20/20, 11:27 AM	Tier Shipping Grid - Standard shipping (weight)	Delivered	2	PDF	ThingPark Marketplace
+	● 000005879-2	000005879	10/16/20, 9:17 AM	10/16/20, 9:17 AM	Tier Shipping Grid - Standard shipping (weight)	Delivered	3	PDF	ThingPark Marketplace
+	● 000005756-1	000005756	6/16/20, 3:49 PM	6/16/20, 3:49 PM	Tier Shipping Grid - Standard shipping (weight)	Delivered	2	PDF	ThingPark Marketplace
+	● 000005726-2	000005726	6/1/20, 9:30 PM	6/1/20, 9:30 PM	Tier Shipping Grid - Standard shipping (weight)	Delivered	2	PDF	ThingPark Marketplace
+	● 000005662-1	000005662	5/18/20, 11:47 AM	5/18/20, 11:48 AM	Tier Shipping Grid - Standard shipping (weight)	Delivered	1	PDF	ThingPark Marketplace
+	● 000005647-1	000005647	5/14/20, 4:43 PM	5/18/20, 11:43 AM	Tier Shipping Grid - Standard shipping (weight)	Canceled	1	PDF	ThingPark Marketplace
+	● 000005372-1	000005372	1/29/20, 4:19 PM	1/29/20, 4:19 PM	Tier Shipping Grid - Standard shipping (weight)	Delivered	2	PDF	ThingPark Marketplace
+	● 000005056-1	000005056	10/1/19, 9:20 AM	10/1/19, 9:20 AM	Tier Shipping Grid - Standard shipping (weight)	Delivered	2	PDF	ThingPark Marketplace
+	● 000005050-1	000005050	9/27/19, 11:51 PM	9/27/19, 11:51 PM	Tier Shipping Grid - Standard shipping (weight)	Delivered	1	PDF	ThingPark Marketplace

Items 1 to 10 of 21 total

Show 10 per page

You're currently reading page 1 [Page 2](#) [Page 3](#) [Next Page](#)

Seller Portal

Activity

A Partner Success Story

Road Surface Temperature Monitoring
Uniotec Ltd

UNIOTEC



About Uniotec

- We are a bespoke IoT solutions provider based in Norwich, UK
- Our customers include government and businesses across the UK
- We provide our customers with a full end to end solution including hardware and software combined with Actility connectivity

michael.price@uniotec.co.uk

<https://uniotec.co.uk>

Actility

UNIOTEC



Michael Price - CEO

Road Surface Temperature Monitoring

- One local authority customer treats over 3,500 km of roads with salt
- Decisions to treat the entire network are based on data from fewer than 10 weather stations
- Each treatment costs over €47,000 with some nights requiring multiple treatments
- Adding additional LoRaWAN sensors allows warmer areas to be treated less frequently bringing big cost savings



Over 20 LoRaWAN sensors can be installed for the cost of a single weather station

Road Surface Temperature Monitoring

- Temperature probe is installed in a slot cut in the road surface
- LoRaWAN transmitter is installed on a lighting column or sign post
- Installation process takes less than 30 minutes per site



Road Surface Temperature Monitoring



Elsys ELT-2 HP sensors
with High Precision
Temperature Probe

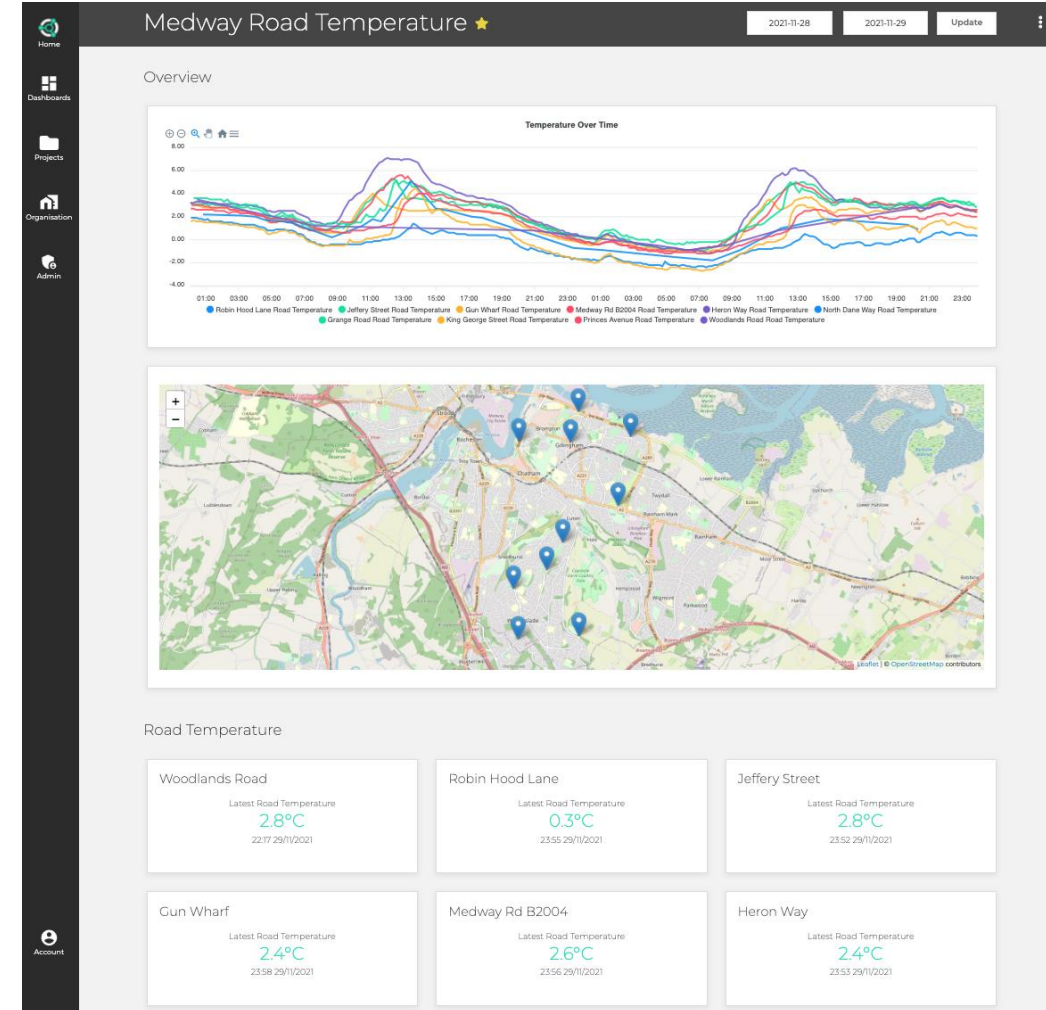
Kerlink Wirnet iStation
LoRaWAN Gateways

TPE SaaS LoRaWAN
Network Server

Uniotec Hub
Application

Road Surface Temperature Monitoring

- Sensors connect via gateways on Thing Park Enterprise network server
- Data is passed to the Uniotec Hub platform
 - The hub allows customers to see the state of their road network at a glance
 - Alerts can be sent when temperatures are low
 - API connection allows weather forecasters to incorporate the live data into their own systems



Thank You!

Continue the discussion and contact Actility technical and commercial experts at channels@actility.com

Or directly at:

michael.price@uniotec.co.uk

ramez.soss@actility.com

rohit.gupta@actility.com

sitha.oum@actility.com

shmuel.solomon@actility.com

